



BC Centre for Disease Control
Provincial Health Services Authority

British Columbia Syphilis Indicators

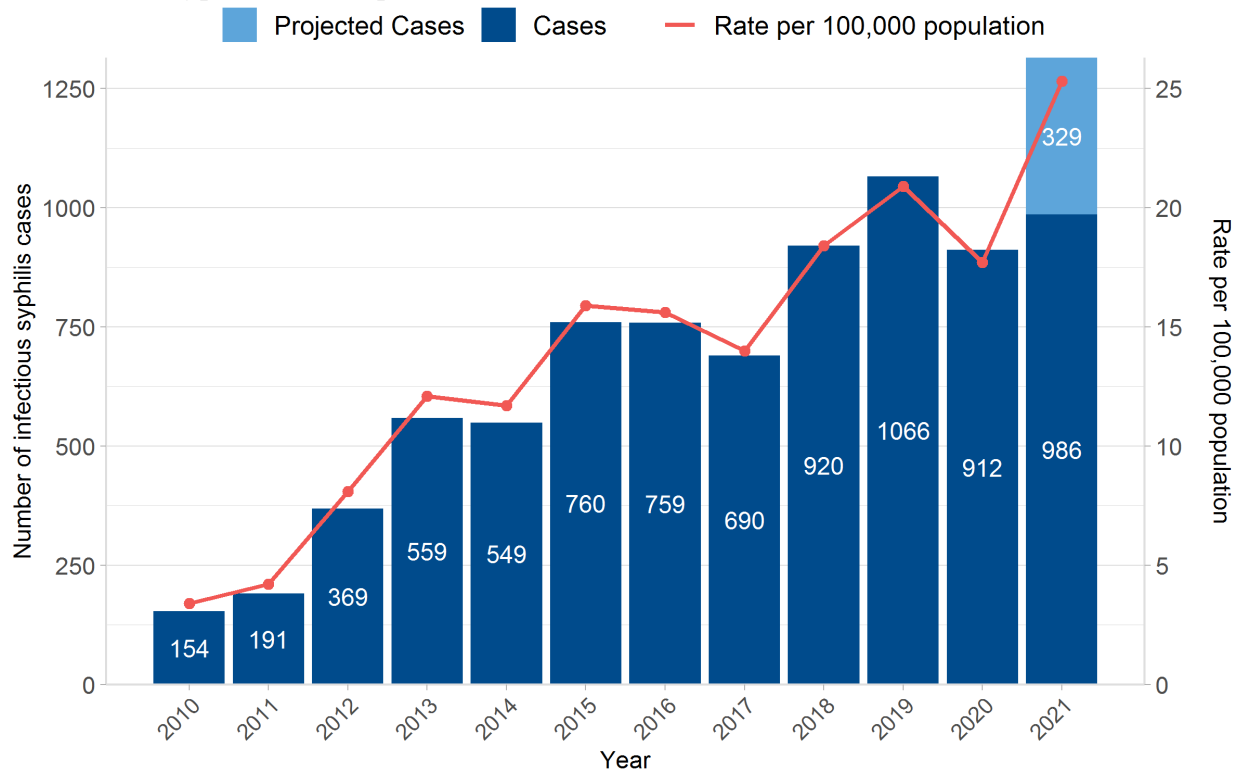
2021 Q3

Table of Contents

Infectious Syphilis in British Columbia	2
1. Infectious syphilis case reports in BC, 2010-2021*	2
2. Infectious syphilis case reports in BC by quarter	3
3. Infectious syphilis case reports in BC by month	4
Infectious Syphilis by Gender and Age Group	5
4. Infectious syphilis case reports in BC by gender, 2010-2021*	5
5. Rate of infectious syphilis case reports in BC by age group and by quarter - total	6
6. Rate of infectious syphilis case reports in BC by age group and by quarter - female	7
7. Rate of infectious syphilis case reports in BC by age group and by quarter - male	8
Infectious Syphilis by Health Authority	9
8. Infectious syphilis case reports in BC by health authority 2010-2021* - total	9
9. Infectious syphilis case reports in BC by health authority 2010-2021* - female	10
10. Infectious syphilis case reports in BC by health authority 2010-2021* - male	11
11. Count of infectious syphilis case reports in BC by health authority and by quarter	12
12. Rate of infectious syphilis case reports in BC by quarter	13
Infectious Syphilis by Gender and Gender of Sexual Partner	14
13. Proportion of infectious syphilis case reports by gender of sexual partner and by quarter	14
Infectious Syphilis in by Stage of Infection	15
14. Proportion of infectious syphilis case reports in BC by stage of infection and by quarter	15
Infectious Neurosyphilis	16
15. Infectious neurosyphilis case reports in BC by quarter	16
Infectious Syphilis among Females 15-49 years	17
16. Infectious syphilis case reports in BC among females 15-49 years, 2010-2021*	17
Infectious Syphilis Diagnosed During Prenatal Screening	18
17. Infectious syphilis case reports in BC among females 15-49 years diagnosed during prenatal screening by quarter	18
Congenital Syphilis	19
18. Congenital syphilis case reports in BC by stage, 1998-2021	19
Syphilis Testing Episodes	20
19. Syphilis non-prenatal testing episodes* and percent positivity in BC by month - total	20
20. Syphilis non-prenatal testing episodes* and percent positivity in BC by month - female	21
21. Syphilis non-prenatal testing episodes* and percent positivity in BC by month - male	22
Technical Appendix	23
British Columbia Syphilis Case Definitions	23
Data Sources	23

Infectious Syphilis in British Columbia

1. Infectious syphilis case reports in BC, 2010-2021*



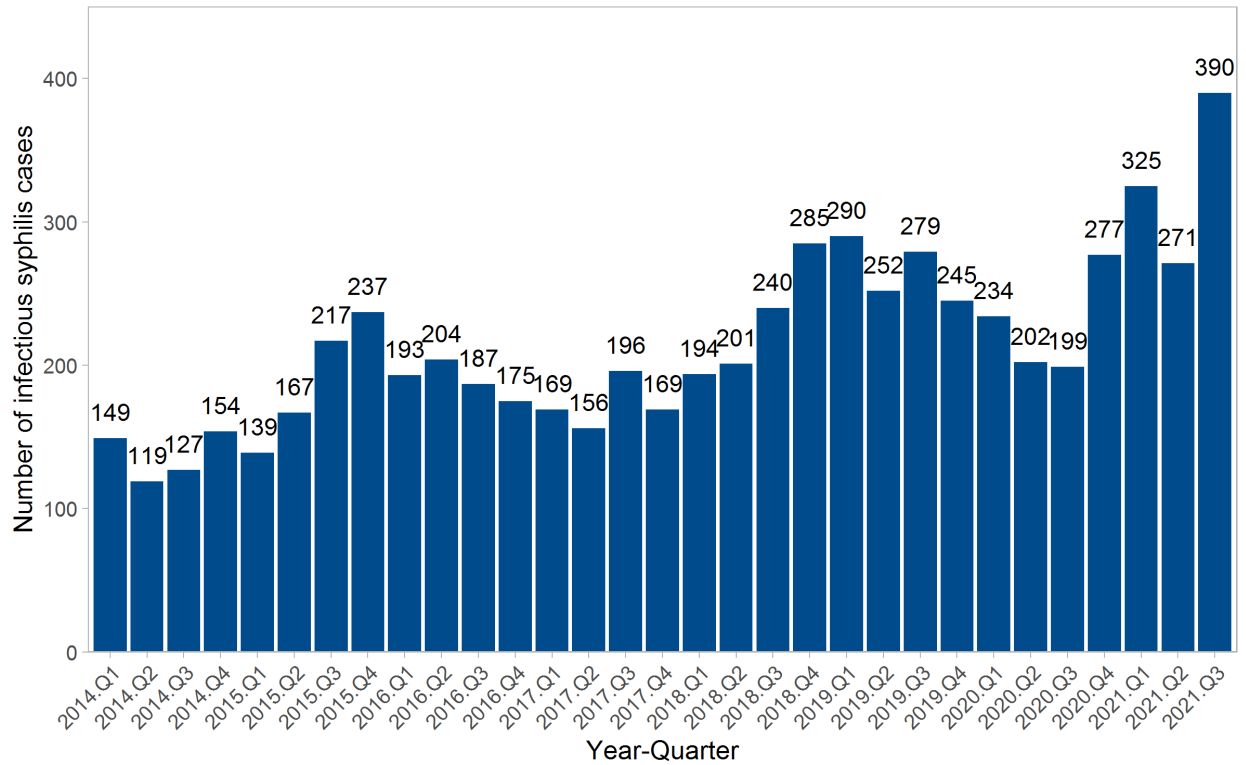
Preliminary data and subject to change

-*Projected case counts/rate assumes that the average number of reported cases per month year to date (YTD) will remain constant throughout 2021.

-Note that 2018 to 2021 case counts are subject to change.

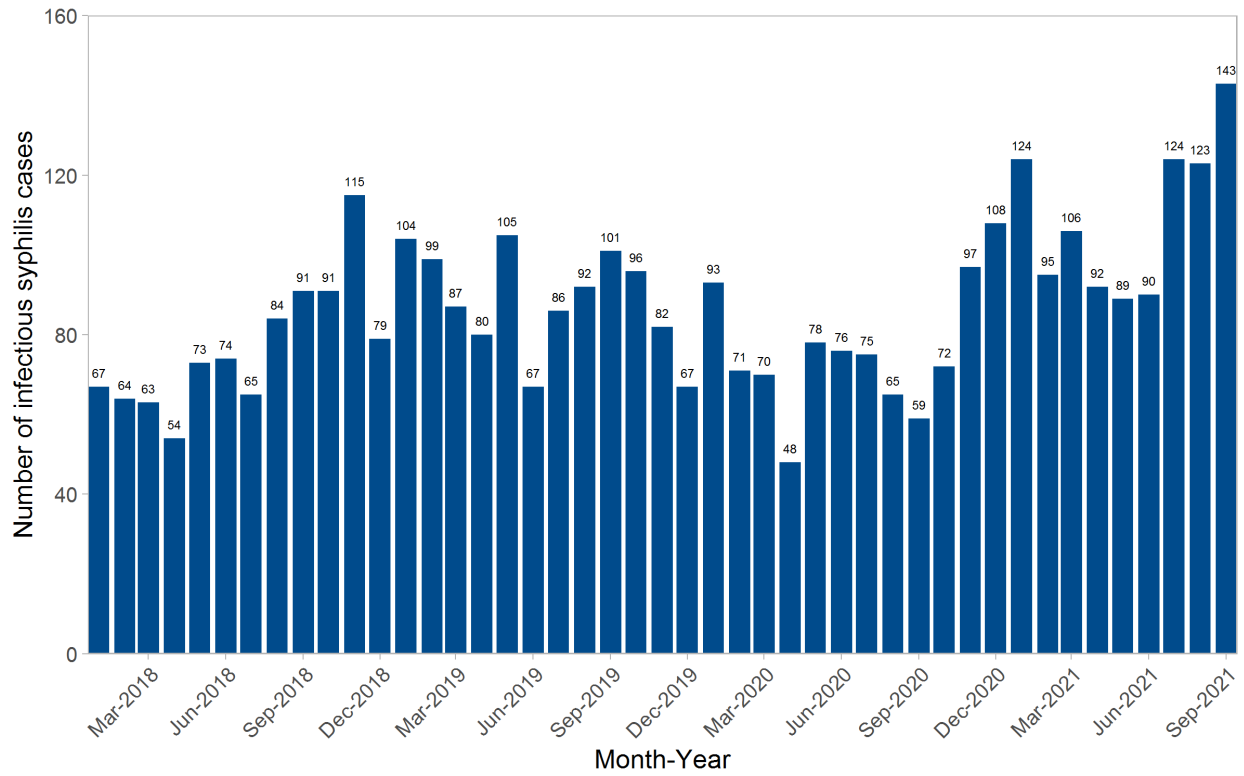
-Infectious Syphilis case reports exclude congenital syphilis cases.

2. Infectious syphilis case reports in BC by quarter



Preliminary data and subject to change

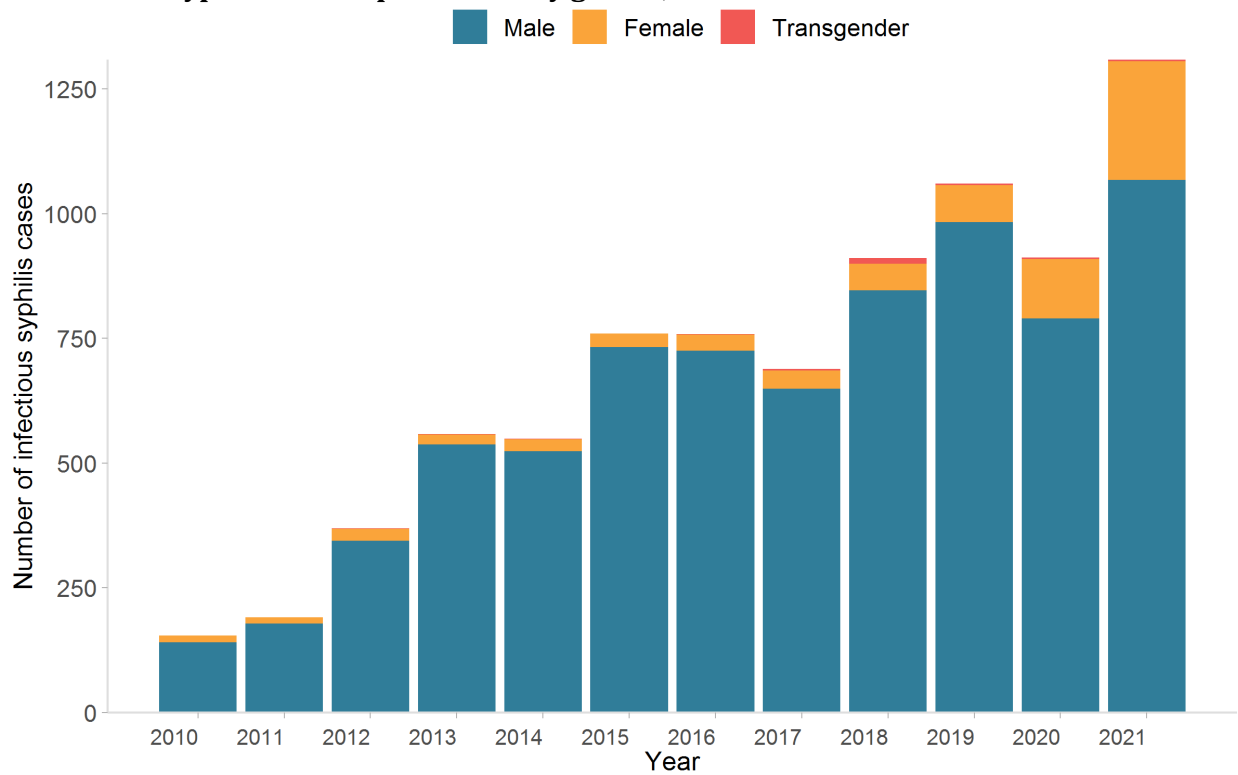
3. Infectious syphilis case reports in BC by month



Preliminary data and subject to change

Infectious Syphilis by Gender and Age Group

4. Infectious syphilis case reports in BC by gender, 2010-2021*

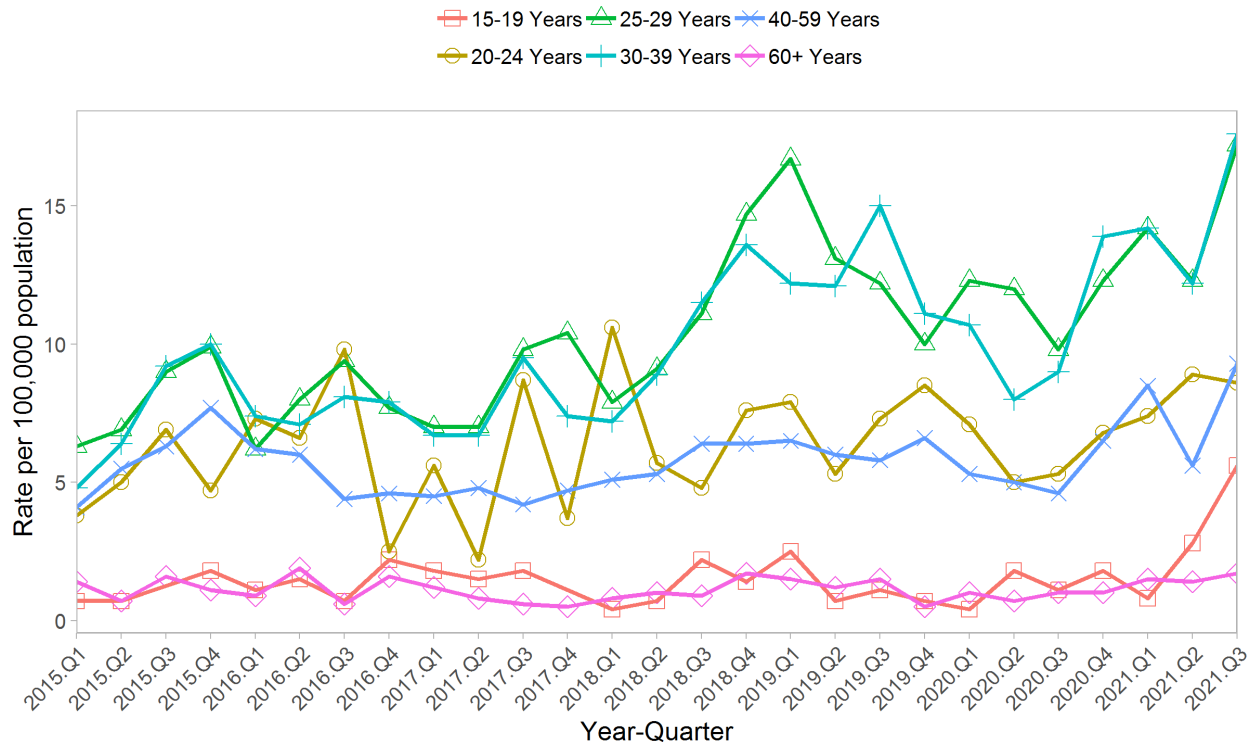


Preliminary data and subject to change

-*Projected case counts assume that the average number of reported cases per month year to date (YTD) will remain constant throughout 2021.

-Note: Gender is based on the gender variable values collected in Intrahealth Profile EMR which is structured as male, female, transgender and unknown. Data shown reflects male, female, and transgender responses only.

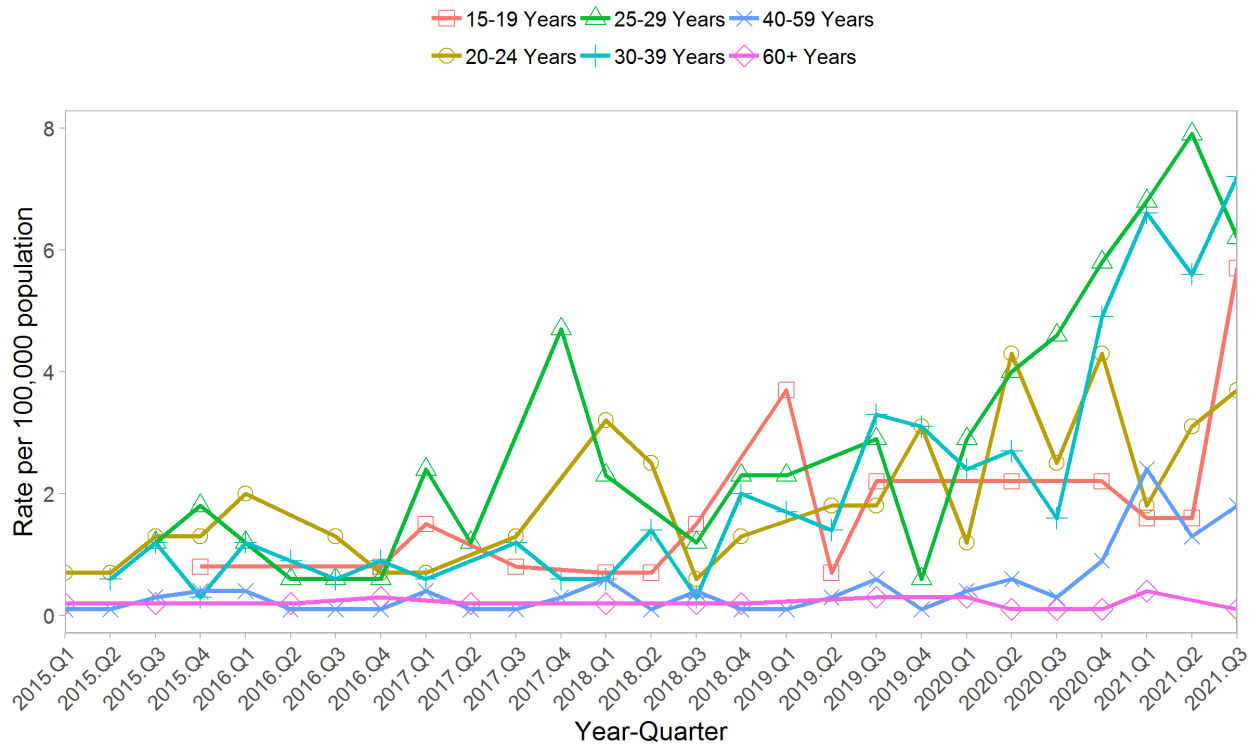
5. Rate of infectious syphilis case reports in BC by age group and by quarter - total



Preliminary data and subject to change

-Note: Excludes cases where age could not be calculated due to missing date of birth.

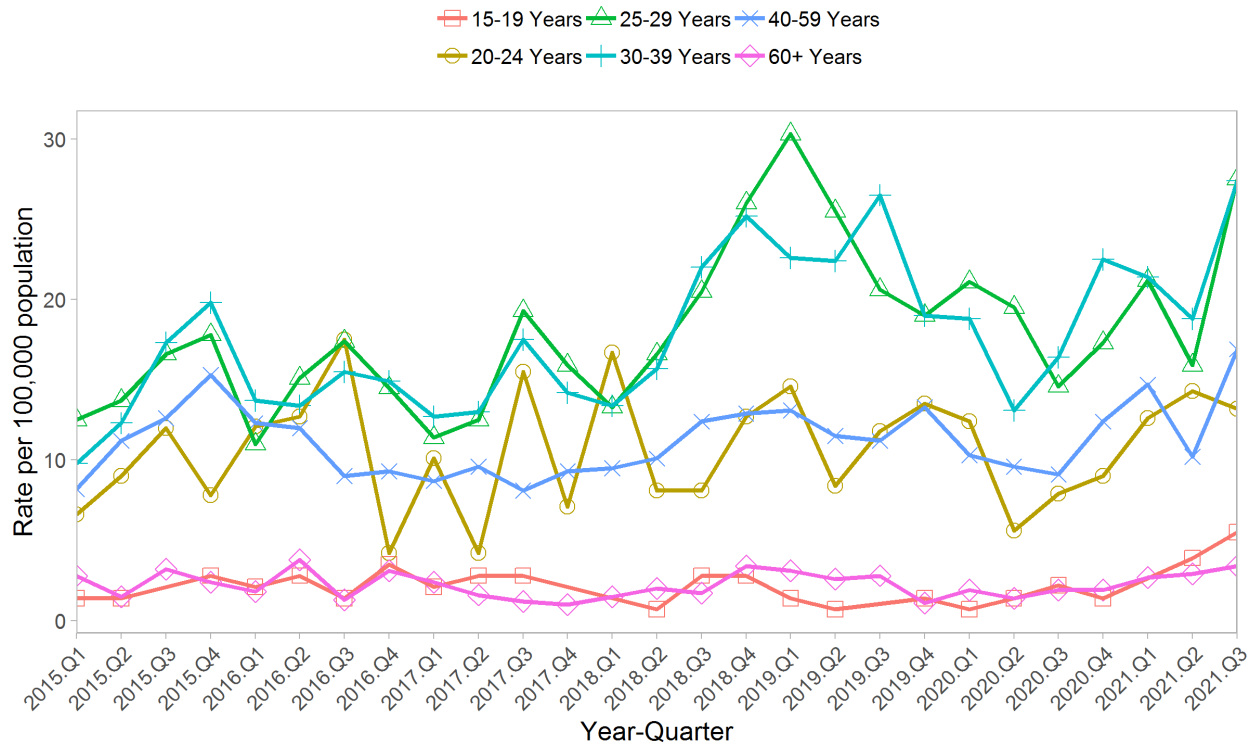
6. Rate of infectious syphilis case reports in BC by age group and by quarter - female



Preliminary data and subject to change

-Note: Excludes cases where age could not be calculated due to missing date of birth.

7. Rate of infectious syphilis case reports in BC by age group and by quarter - male

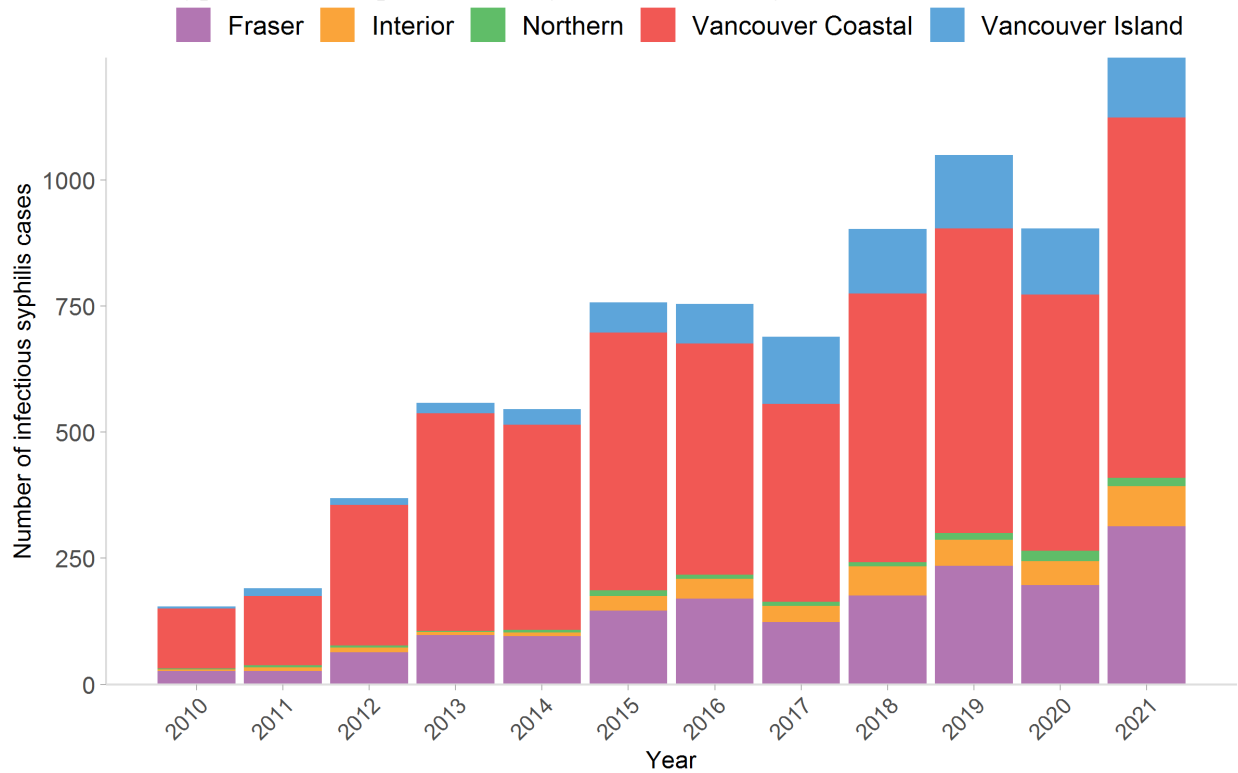


Preliminary data and subject to change

-Note: Excludes cases where age could not be calculated due to missing date of birth.

Infectious Syphilis by Health Authority

8. Infectious syphilis case reports in BC by health authority 2010-2021* - total

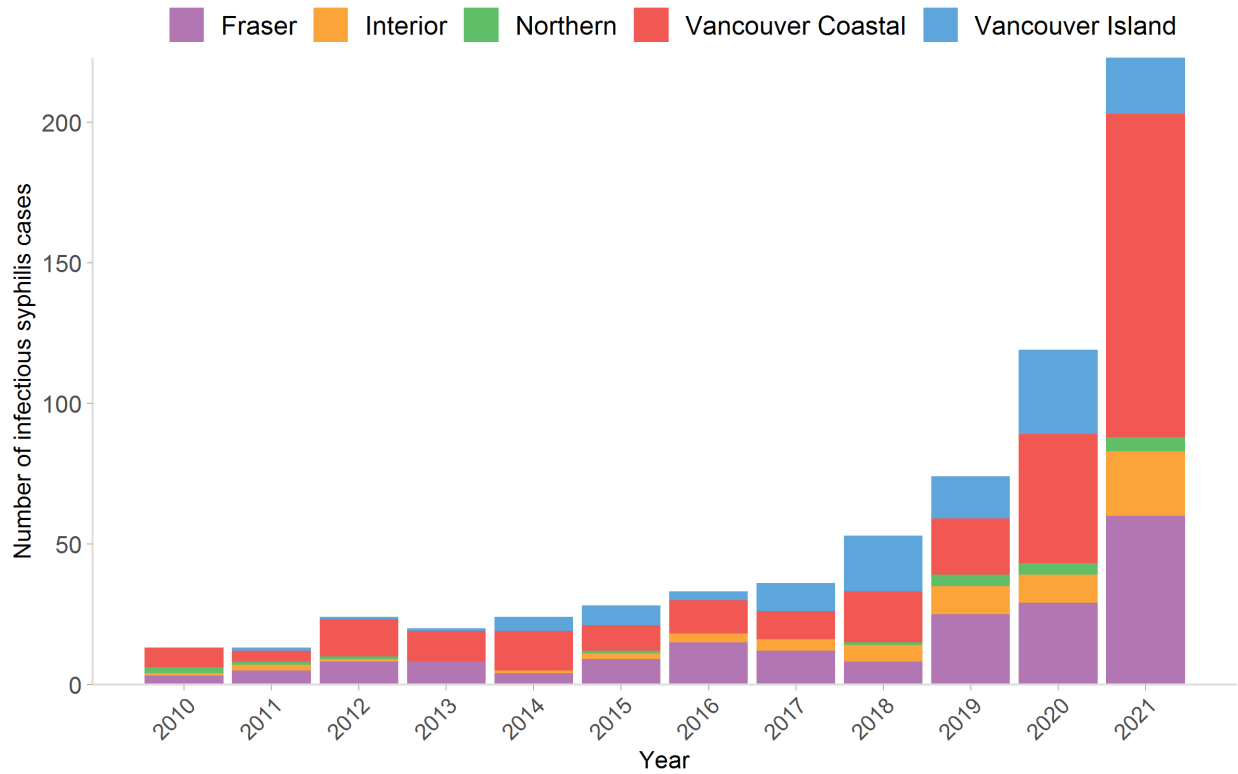


Preliminary data and subject to change

-*Projected case counts assume that the average number of reported cases per month year to date (YTD) will remain constant throughout 2021.

-Note: Excludes missing and unknown geography.

9. Infectious syphilis case reports in BC by health authority 2010-2021* - female

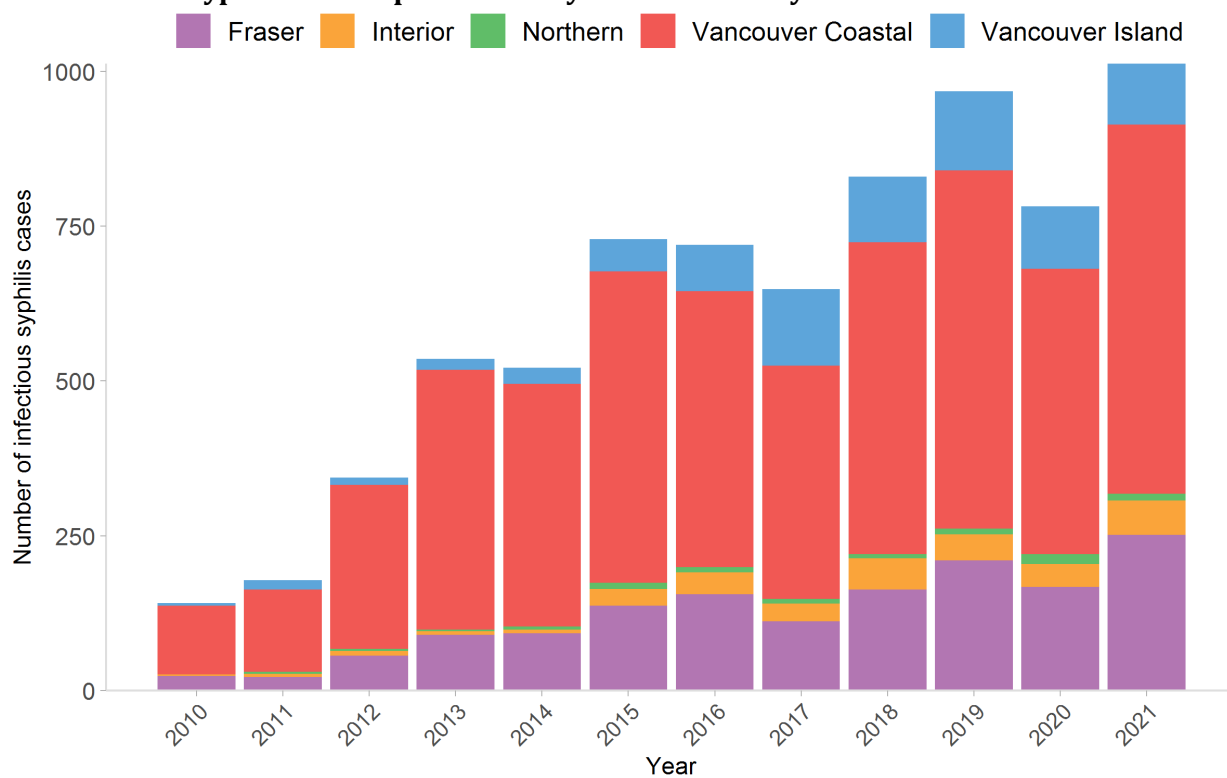


Preliminary data and subject to change

-*Projected case counts assume that the average number of reported cases per month year to date (YTD) will remain constant throughout 2021.

-Note: Excludes missing and unknown geography.

10. Infectious syphilis case reports in BC by health authority 2010-2021* - male

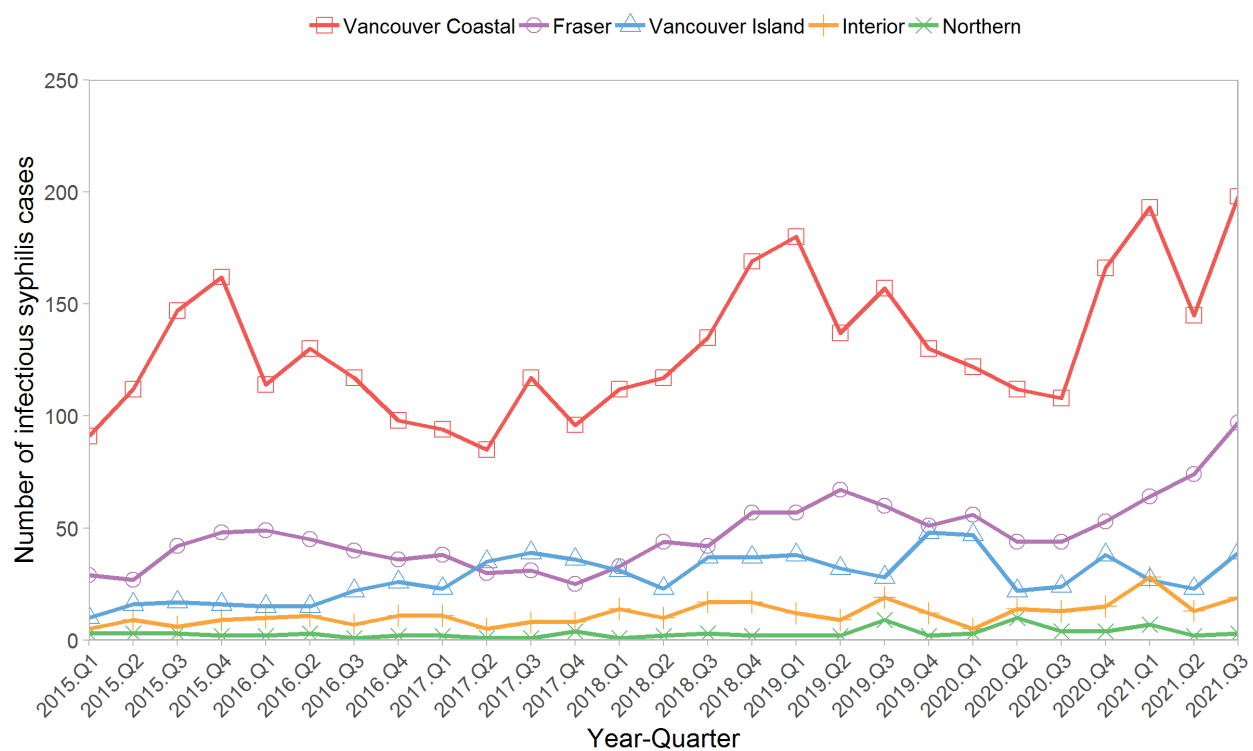


Preliminary data and subject to change

-*Projected case counts assume that the average number of reported cases per month year to date (YTD) will remain constant throughout 2021.

-Note: Excludes missing and unknown geography.

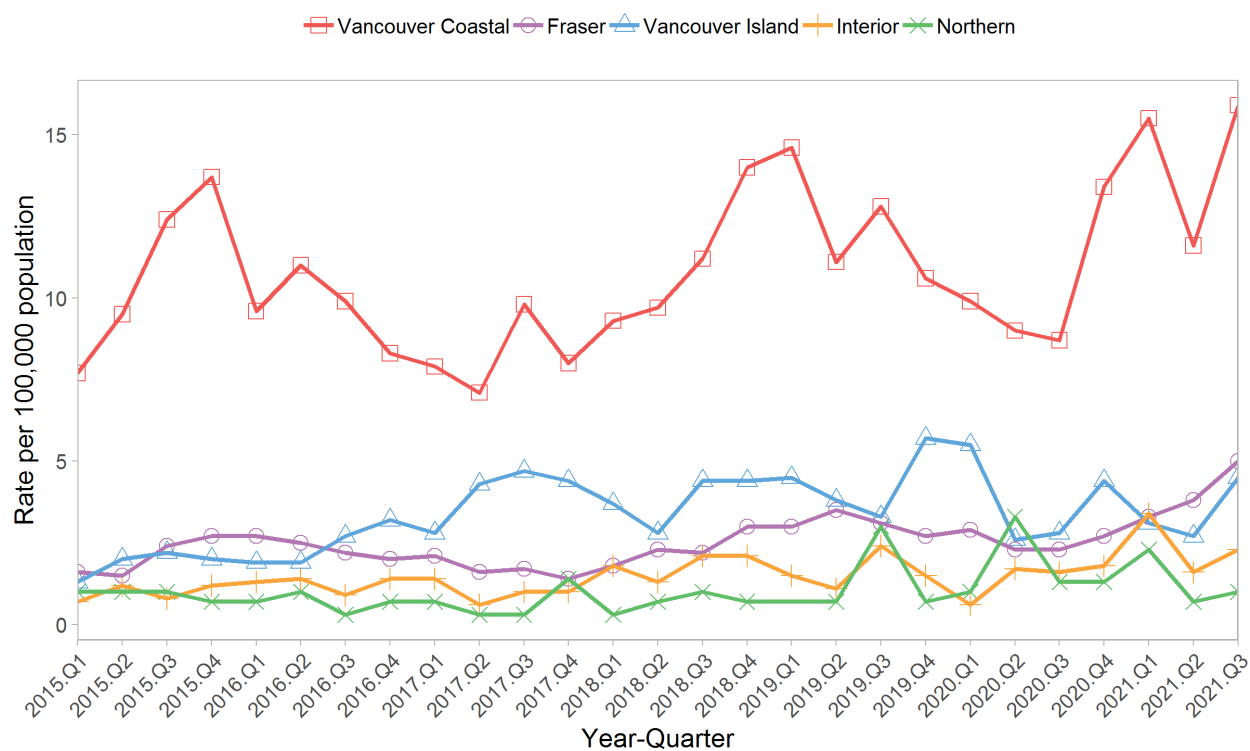
11. Count of infectious syphilis case reports in BC by health authority and by quarter



Preliminary data and subject to change

-Note: Excludes missing and unknown geography.

12. Rate of infectious syphilis case reports in BC by quarter

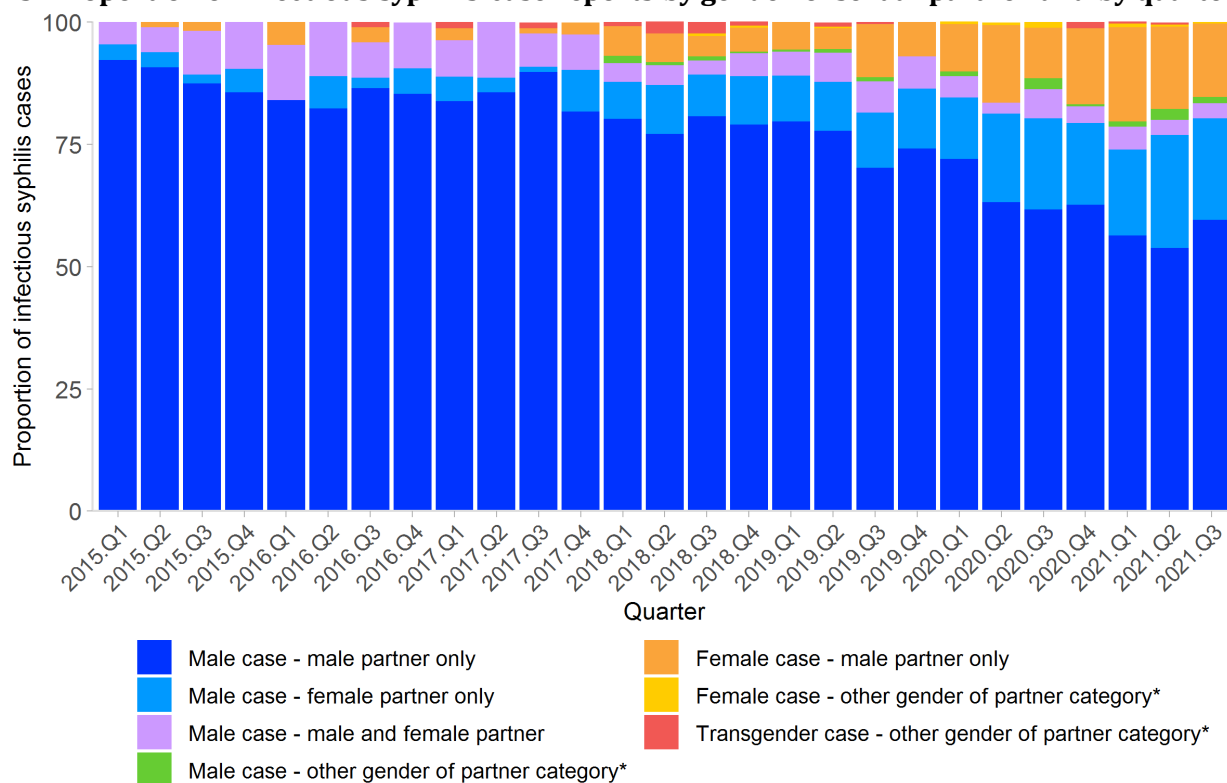


Preliminary data and subject to change

-Note: Excludes missing and unknown geography.

Infectious Syphilis by Gender and Gender of Sexual Partner

13. Proportion of infectious syphilis case reports by gender of sexual partner and by quarter



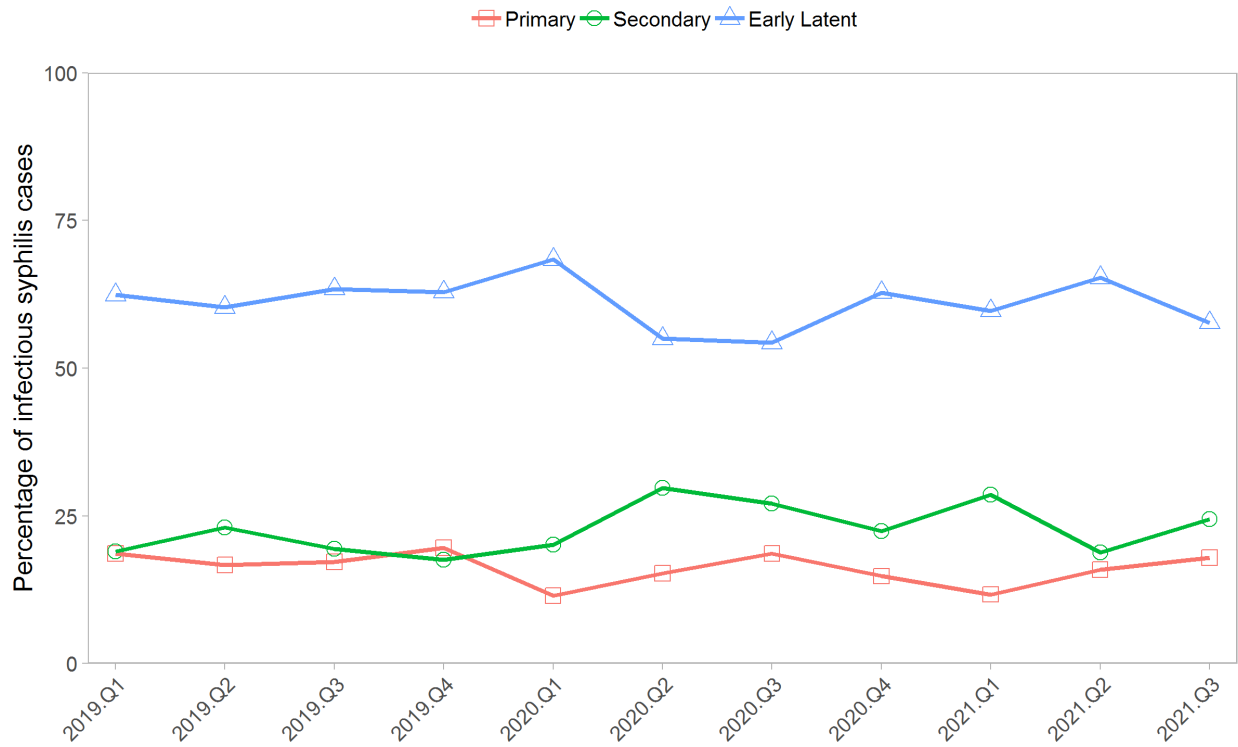
Preliminary data and subject to change

-Note: Gender of sexual partner is based on the “gender of sexual partners” variable values collected in Intrahealth Profile EMR which is structured as male, female, transgender and unknown. Data shown reflects male, female, and transgender responses only.

-***Other gender of partner category** includes cases who reported the gender(s) of their sexual partners as any of the following: Transgender; Female and Transgender; Male and Transgender; Male, Female and Transgender; Female partner (for female cases only).

Infectious Syphilis in by Stage of Infection

14. Proportion of infectious syphilis case reports in BC by stage of infection and by quarter

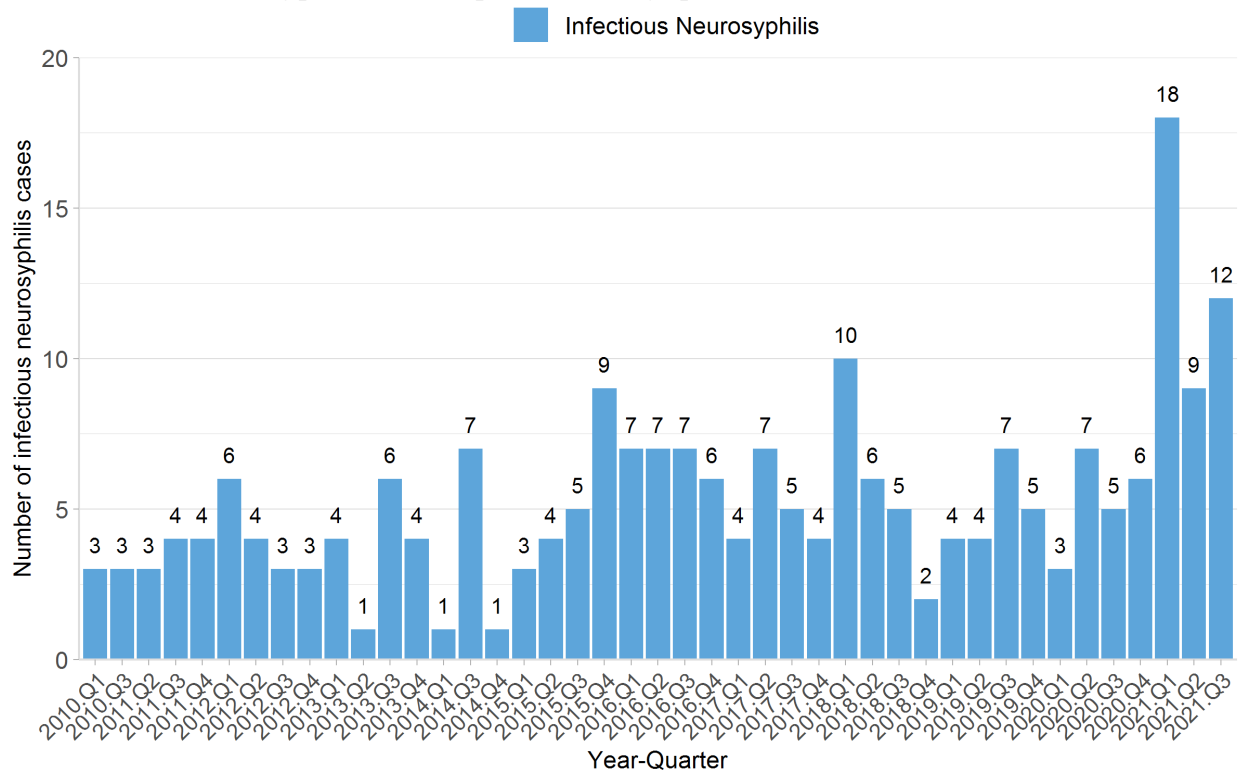


Preliminary data and subject to change

-Note: Early Latent cases include both Early Latent and Early Latent Probable Stages

Infectious Neurosyphilis

15. Infectious neurosyphilis case reports in BC by quarter

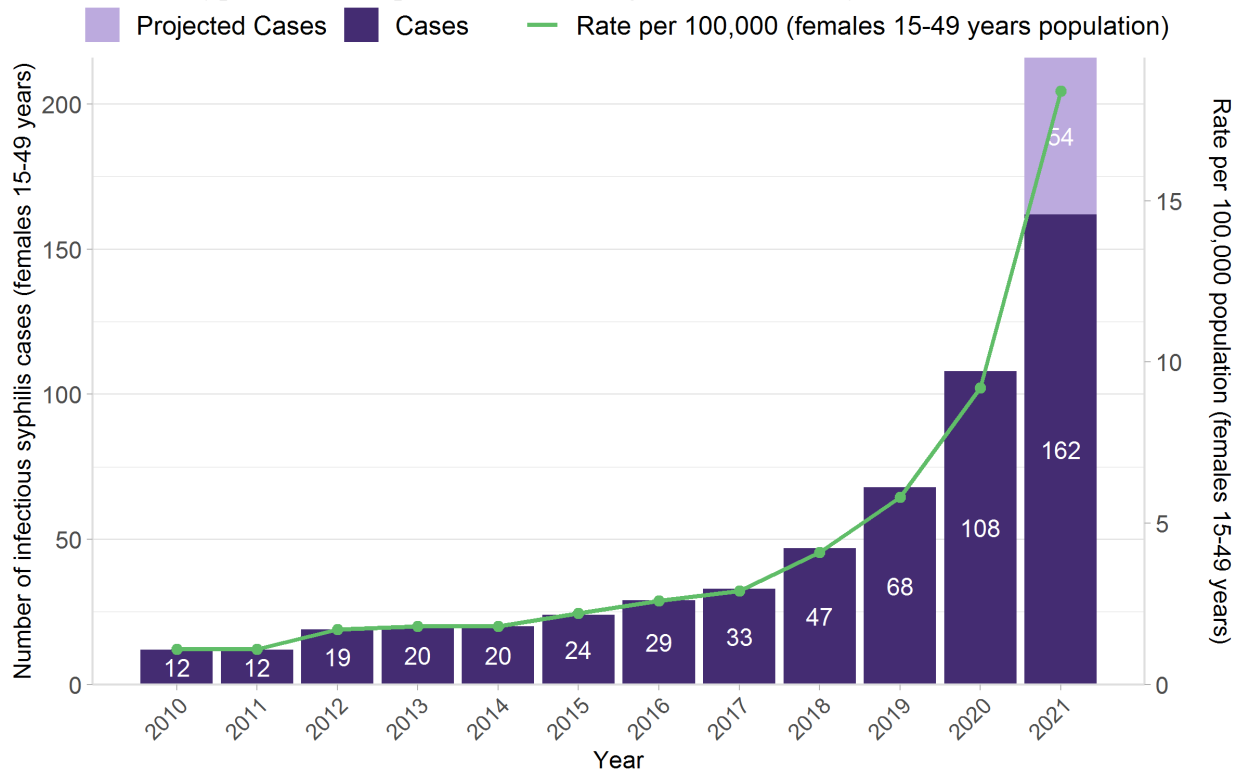


Preliminary data and subject to change

-Note: Infectious neurosyphilis cases include both neuro and or ocular body sites.

Infectious Syphilis among Females 15-49 years

16. Infectious syphilis case reports in BC among females 15-49 years, 2010-2021*



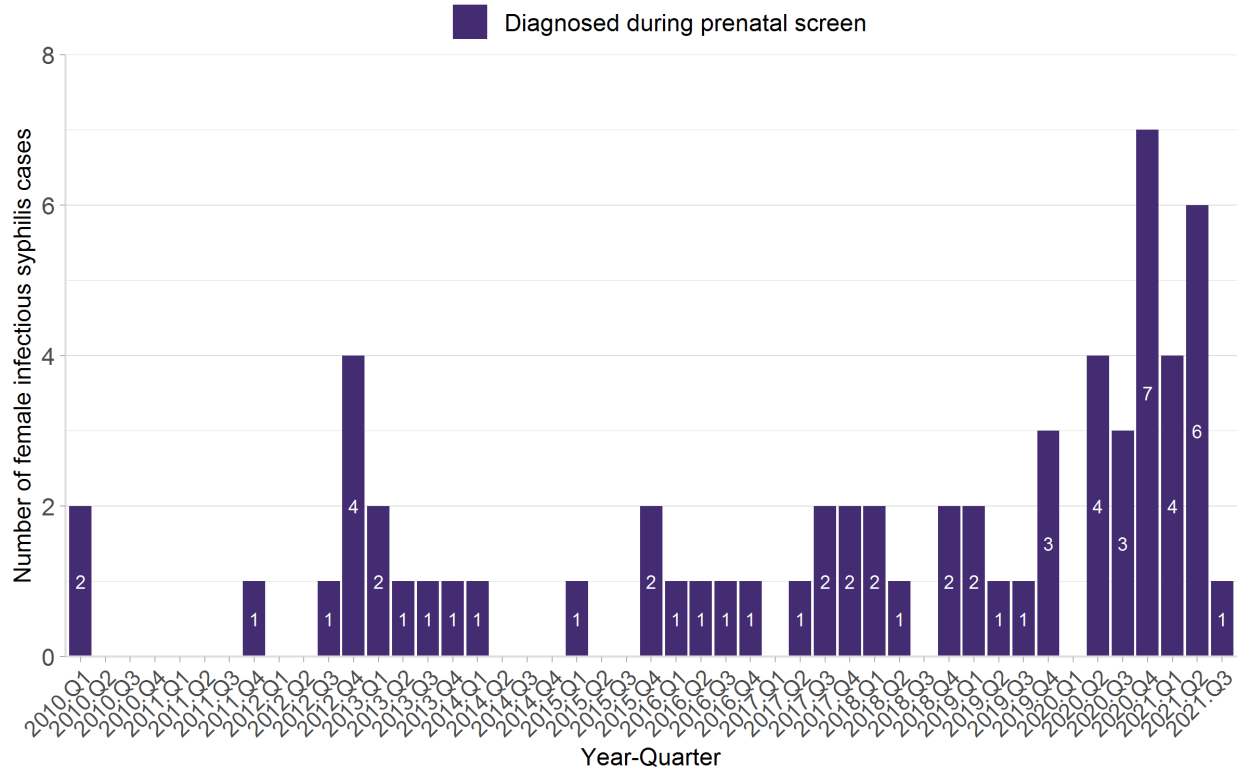
Preliminary data and subject to change

-*Projected case counts assume that the average number of reported cases per month year to date (YTD) will remain constant throughout 2021.

-Note: The number of infectious syphilis cases “Females 15-49 years” includes people of all genders who were assigned female at birth. The rate per 100,000 population uses the BC population data of people of female sex aged 15-49 years.

Infectious Syphilis Diagnosed During Prenatal Screening

17. Infectious syphilis case reports in BC among females 15-49 years diagnosed during prenatal screening by quarter

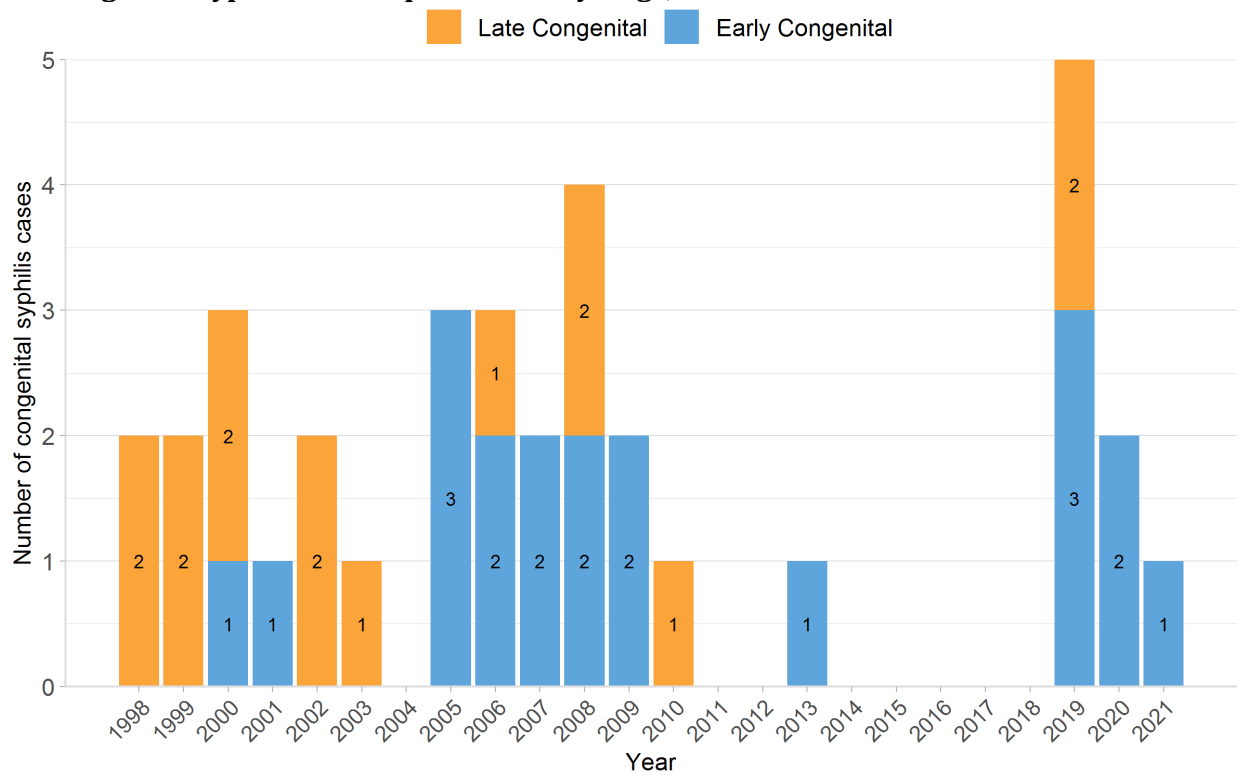


Preliminary data and subject to change

-Note: The number of infectious syphilis cases “Females 15-49 years” includes people of all genders who were assigned female at birth. The rate per 100,000 population uses the BC population data of people of female sex aged 15-49 years.

Congenital Syphilis

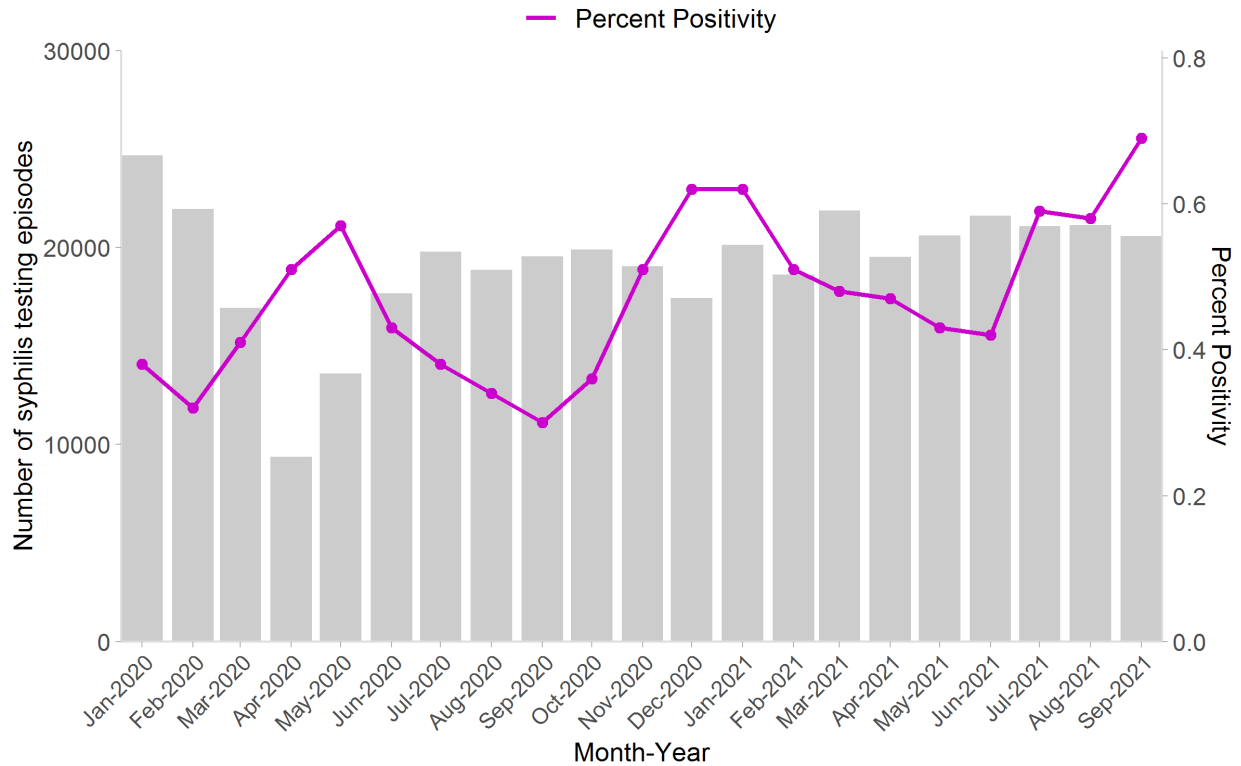
18. Congenital syphilis case reports in BC by stage, 1998-2021



Preliminary data and subject to change

Syphilis Testing Episodes

19. Syphilis non-prenatal testing episodes* and percent positivity in BC by month - total

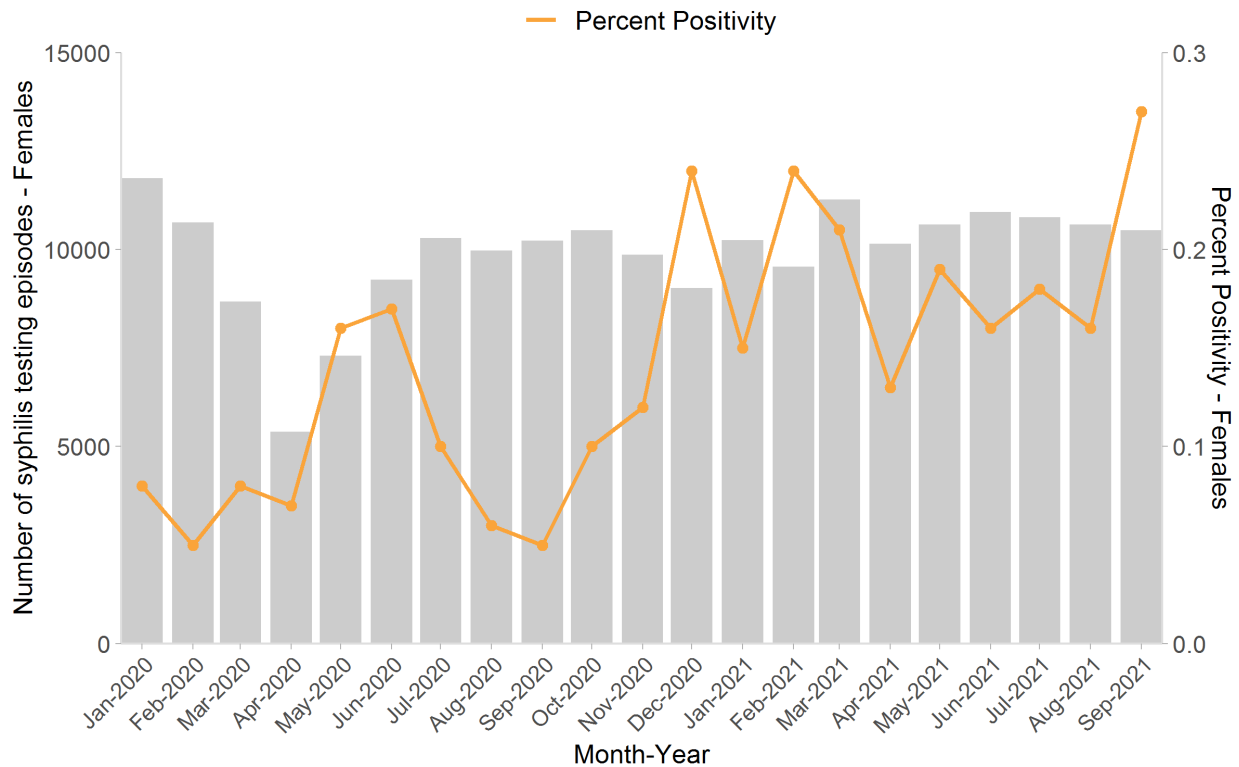


Preliminary data and subject to change

-*Testing episode = 30-day window (see technical appendix for further details)

-Note: Percent positivity is calculated as the number of infectious syphilis cases over testing episodes, where a testing episode is defined as a 30-day window.

20. Syphilis non-prenatal testing episodes* and percent positivity in BC by month - female



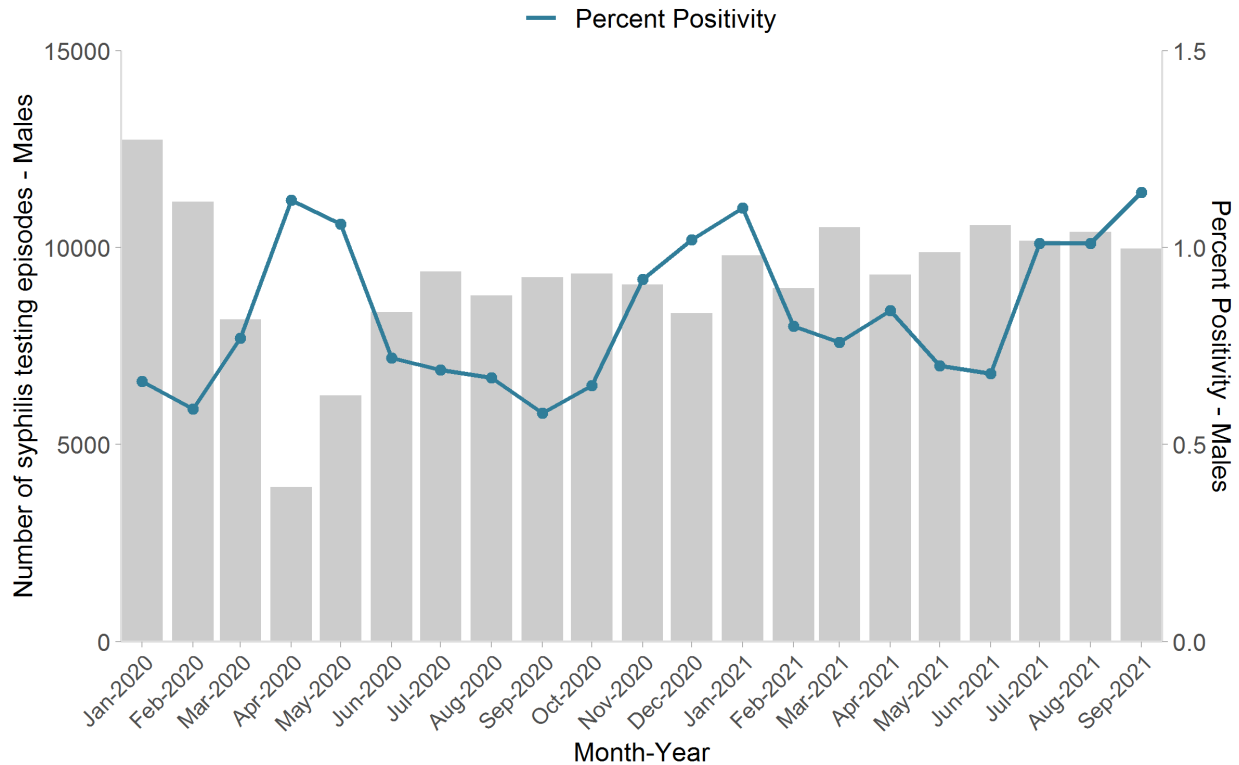
Preliminary data and subject to change

-*Testing episode = 30-day window (see technical appendix for further details).

-Note: Percent positivity is calculated as the number of infectious syphilis cases over testing episodes, where a testing episode is defined as a 30-day window.

-The number of female syphilis non-prenatal testing episodes is based on sex reported on the laboratory requisition. The number of female infectious syphilis cases is based on gender variable values collected in Intrahealth Profile EMR.

21. Syphilis non-prenatal testing episodes* and percent positivity in BC by month - male



Preliminary data and subject to change

-*Testing episode = 30-day window (see technical appendix for further details).

-Note: Percent positivity is calculated as the number of infectious syphilis cases over testing episodes, where a testing episode is defined as a 30-day window.

-The number of male syphilis non-prenatal testing episodes is based on sex reported on the laboratory requisition. The number of male infectious syphilis cases is based on gender variable values collected in Intrahealth Profile EMR.

Technical Appendix

British Columbia Syphilis Case Definitions

<http://www.bccdc.ca/health-professionals/clinical-resources/case-definitions/syphilis>

Data Sources

Case data: This report contains preliminary data on Infectious Syphilis. The STI-IS was sunsetted and a new electronic medical record system (Intrahealth Profile EMR) went live on March 13th, 2018. The report contains data from the following sources:

-Cases reported up to March 12th, 2018: Data was extracted from the STIBBI Mart (source system STIIS);

-Cases reported after March 12th, 2018: Data was extracted from Intrahealth Profile EMR*.

*During the ongoing system transition, there will be slight changes in counts and categorization of some cases, reflecting differences in algorithms and data structure between the data sources.

Note: "Gender" is based on the gender variable values collected in Intrahealth Profile EMR which is structured as Male, Female, Transgender and Unknown. This variable is separate from the sex variable. "Females 15-49 years old" is based on the sex variable values collected in Intrahealth Profile EMR which is structured as Male and Female.

Testing data: This report contains **non-prenatal** testing data for syphilis. A test episode consists of all tests conducted for an individual in a 30-day period (as follow-up or simultaneous test may be required to clarify test results within this period, for example).

-Syphilis testing episodes: Data was extracted from STIBBI.

Denominator data file: This report uses two sources to calculate rates: 1) P.E.O.P.L.E. 2021 Population Estimates data file (projections released by BC Stats) for current 2021 rates and 2) Population Estimates data file for all previous years.

***Please note that the data used to create the Q3 infectious syphilis report was extracted from Intrahealth Profile EMR on October 15th, 2021.